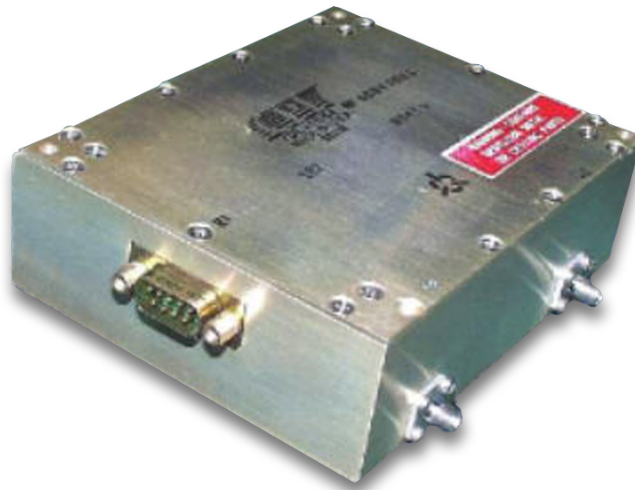


CPI Electron Device Business - Switch



With a history of producing high quality products, we can help you with switch.

Contact us at ElectronDevices@cpi-edb.com or at call us at +1 978-922-6000.

FEATURES:

- High power operation
- Wide bandwidth
- Integral driver

BENEFITS:

- World's largest manufacturer of high power receiver protector and switch products
- State of the art facility with high level of vertical integration
- Extensive high power test capability
- In-house environmental test facility
- Computer modeling and automatic test capabilities

APPLICATIONS:

- Military communications

CPI EDB 225-400 MHz 200 W T/R Switch: VSS3607

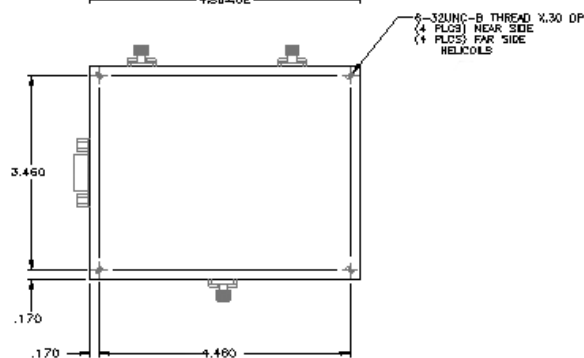
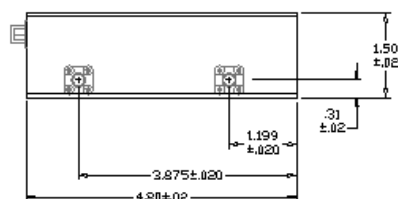
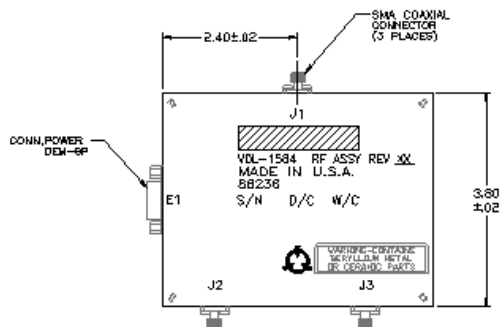
Mechanical and Environmental Specifications

RF Input and output	SMA female
Bias supplies	+5 VDC @ 20 mA max -220 VDC @ 20 mA max
Power & control connector	DEM -9P
Control logic	RS422
Dimensions	See outline drawing
Operating temperature	-20° to +95°C
Humidity	95% max

See product specification for other details

Electrical Specifications

Operating frequency	225-400 MHz
Maximum transit power	200 W CW
Maximum receive power	2 W CW
Maximum antenna mismatch	2.5:1
Maximum insertion loss:	
Transmit	0.5 dB
Receive	1.0 dB
Maximum isolation loss:	
Transmit	75 dB
Receive	50 dB
Maximum switching time	20 μSec
Maximum VSWR	14 dB



Beverly Microwave Division
150 Sohier Road
Beverly, Massachusetts
USA 01915

tel +1 978-922-6000
email ElectronDevices@cpi-edb.com
fax +1 978-922-8914
web www.cpi-edb.com

For more detailed information, please refer to the corresponding CPI EDB technical description if one has been published, or contact CPI EDB. Specifications may change without notice as a result of additional data or product refinement. Please contact CPI EDB before using this information for system design.

©2025 CPI Electron Device Business. Company proprietary; use and reproduction is strictly prohibited without written authorization from CPI EDB.